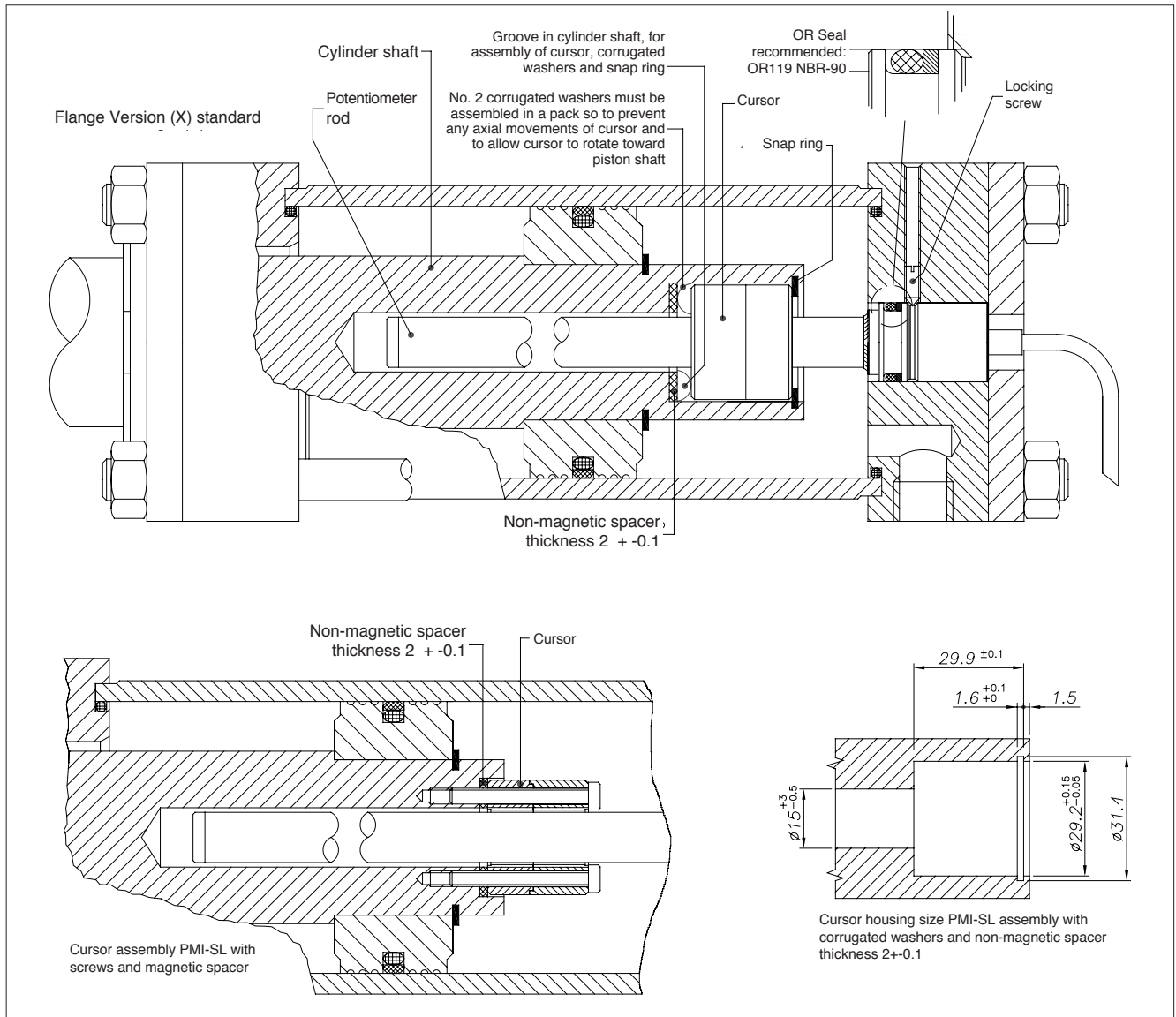
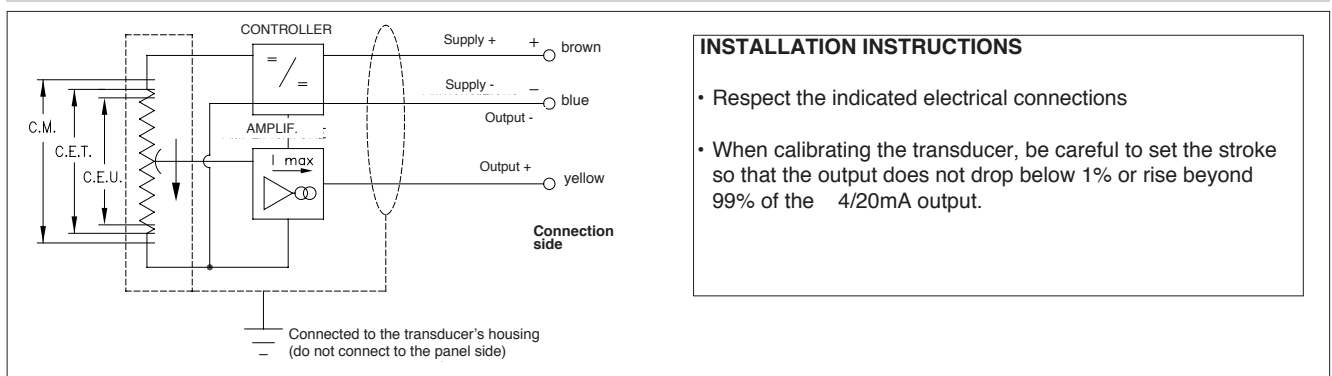


INSTALLATION INSIDE THE CYLINDER



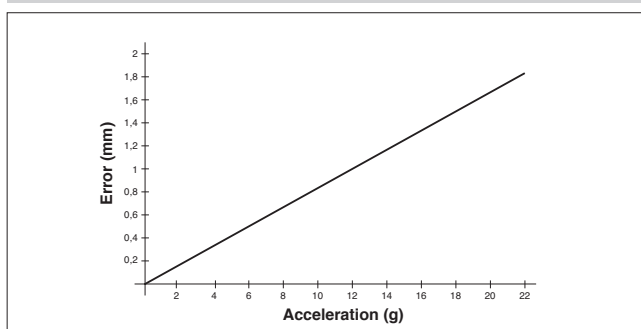
ELECTRICAL CONNECTIONS



INSTALLATION INSTRUCTIONS

- Respect the indicated electrical connections
- When calibrating the transducer, be careful to set the stroke so that the output does not drop below 1% or rise beyond 99% of the 4/20mA output.

TRACKING ERROR



LOAD DIAGRAM

